



CHRISTOPHER JONNA
PRESIDENT

cjonna@cmprealestategroup.com

ANDREW ROYE
ASSOCIATE

aroye@cmprealestategroup.com

6476 Orchard Lake Road, Suite A
West Bloomfield, Michigan 48322

(P): (248) 538-2000

www.cmprealestategroup.com

PROPERTY INFORMATION

Property Address 25373 Schoenherr Road

City/State Warren, Michigan

Building Size 9,300 SF

Space Available 1,326 SF

Asking Rate Contact Broker

Estimated NNN's \$6.00 PSF

Parking 77 Spaces

JOIN



Great Clips



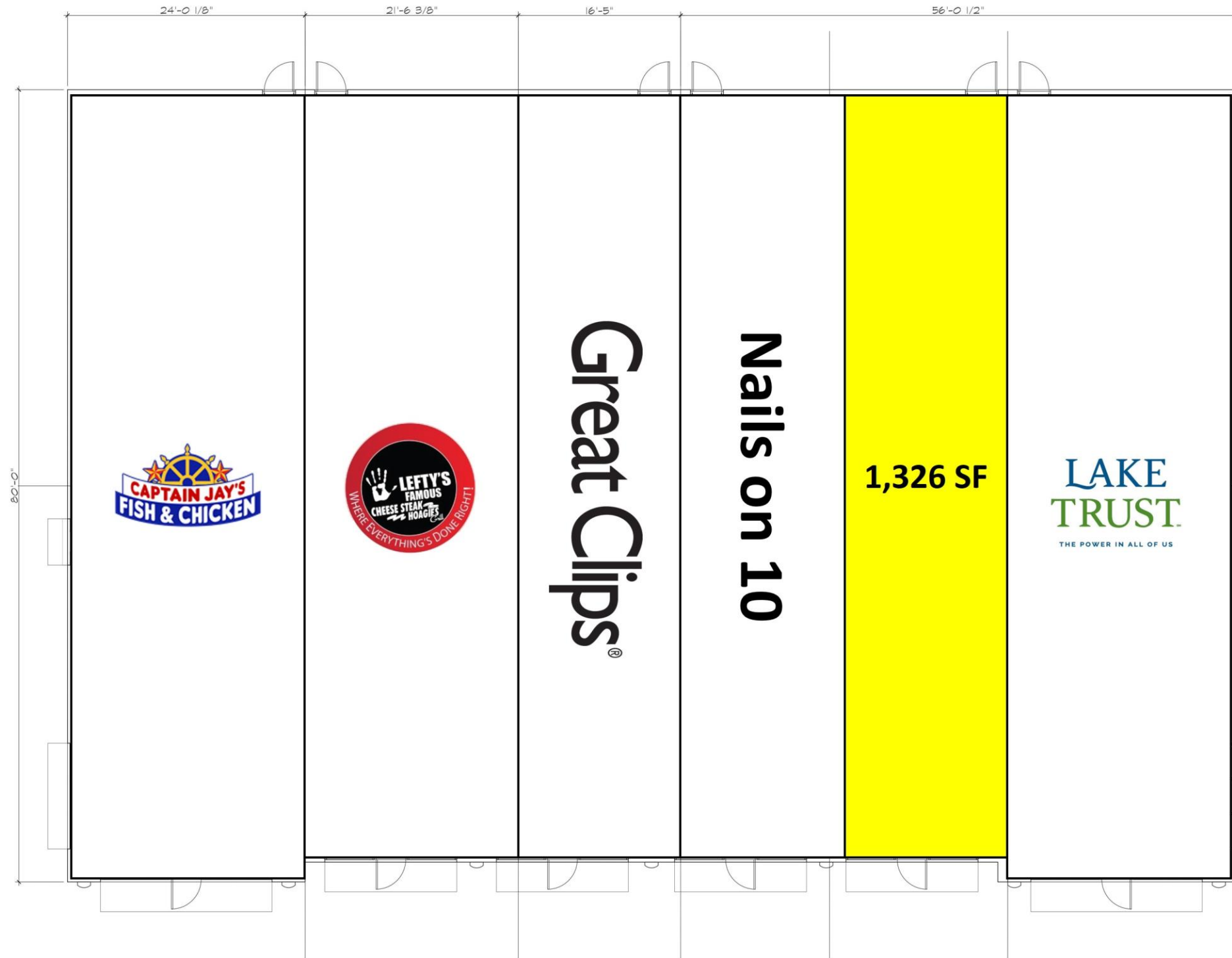
AREA TENANTS



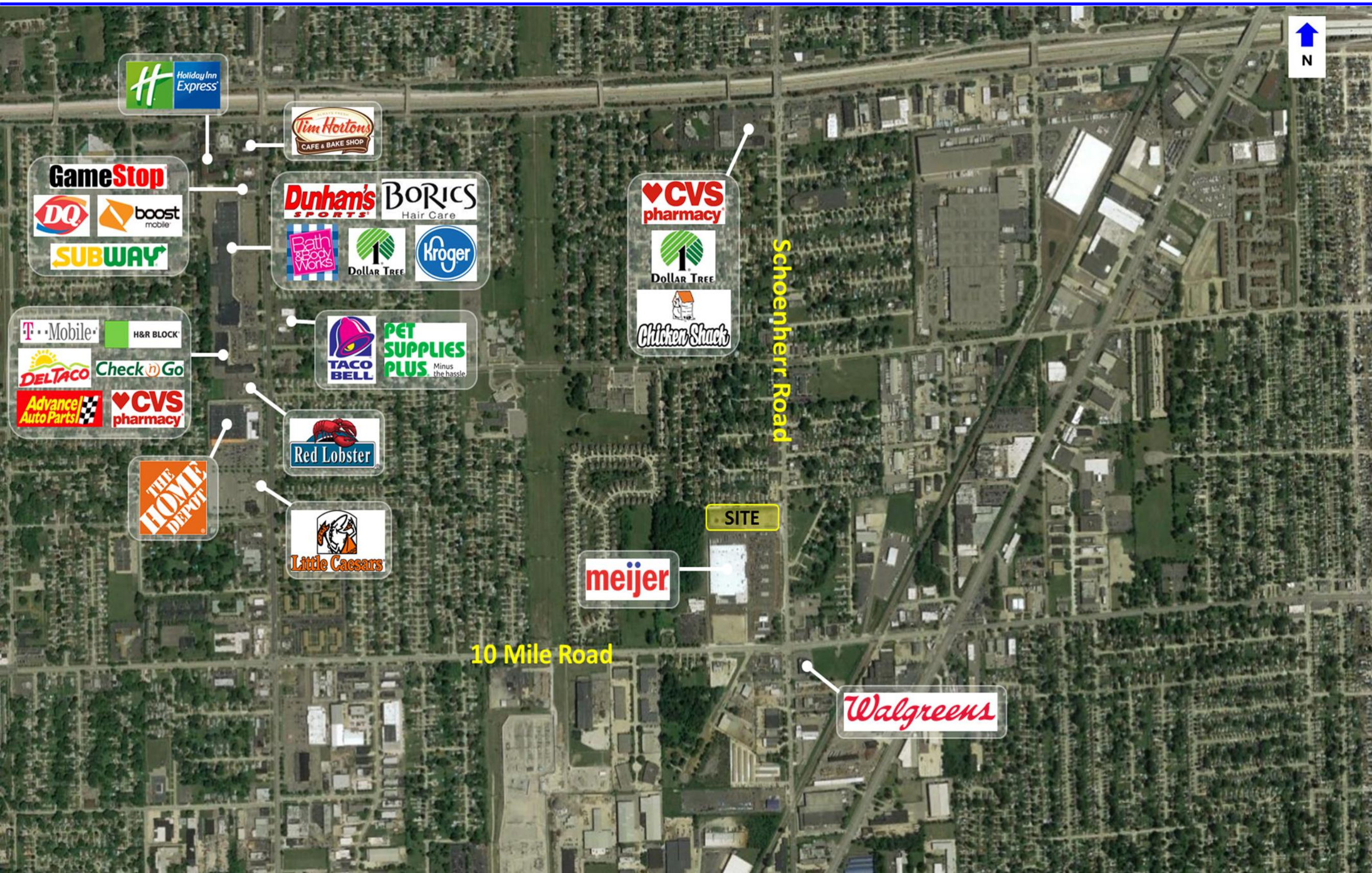
PROPERTY HIGHLIGHTS

- Retail Plaza located in on a pad site to Meijer.
- The site is accessible from Schoenherr & Ten Mile Roads.
- Excellent visibility to Schoenherr Road.
- Excellent location for restaurants, medical & service retailers.









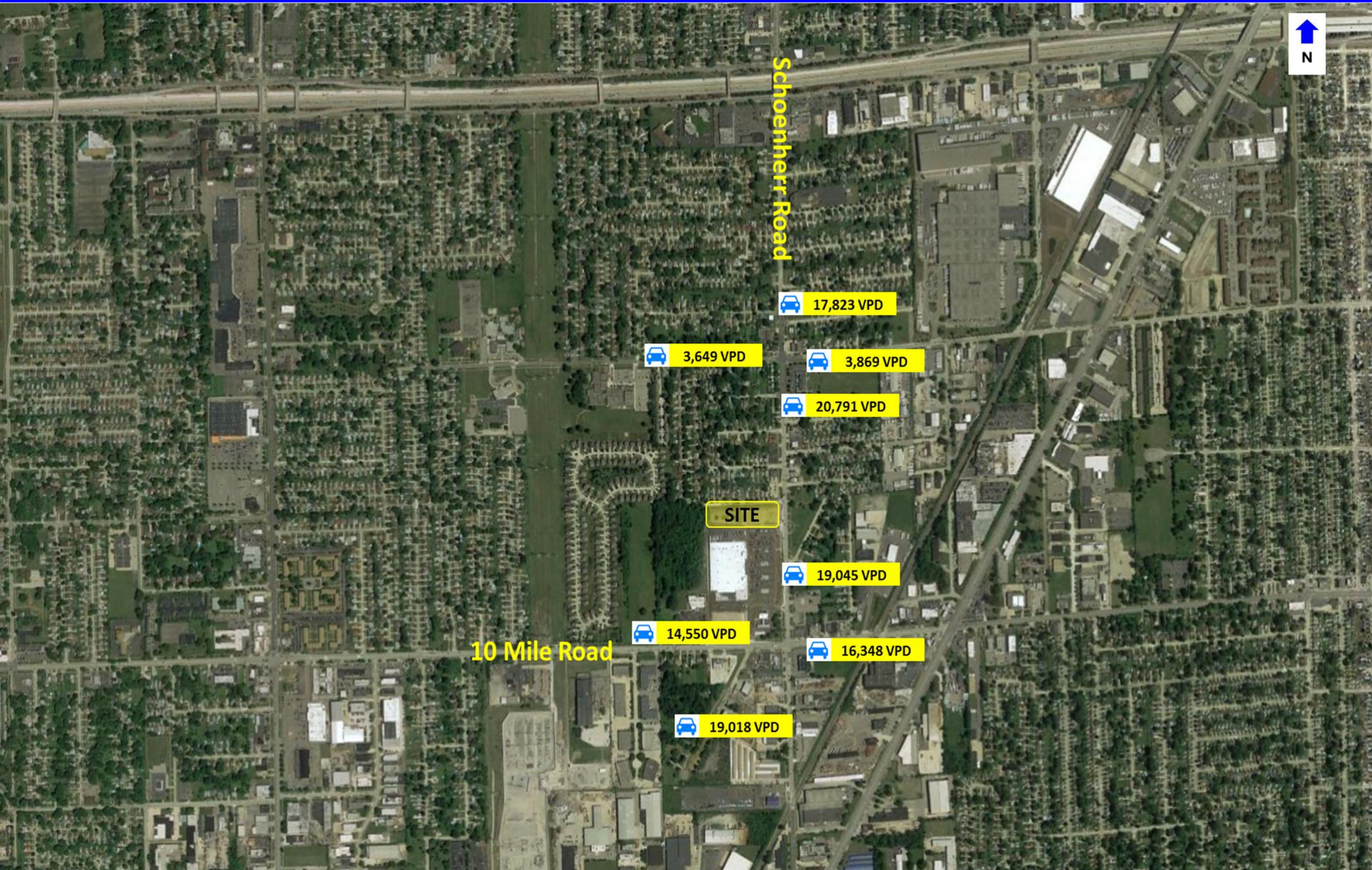
Schoenherr Road

SITE



10 Mile Road





POPULATION	1 MILE	3 MILE	5 MILE
2010 Population	56,288	373,394	1,150,357
2022 Population	56,190	366,714	1,128,635
2027 Population Projection	55,822	363,875	1,119,471
Annual Growth 2010-2022	0.00%	-0.10%	-0.20%
Annual Growth 2022-2027	-0.10%	-0.20%	-0.20%
Median Age	40.3	39	39.9
Bachelor's Degree or Higher	13%	14%	23%

HOUSEHOLDS	1 MILE	3 MILE	5 MILE
2010 Households	22,647	145,253	463,784
2022 Households	22,573	142,542	454,982
2027 Household Projection	22,414	141,351	451,119
Owner Occupied Households	15,553	98,751	293,656
Renter Occupied Households	6,861	42,600	157,464
Avg Household Income	59,473	61,524	70,737
Median Household Income	46,821	49,150	52,977

POPULATION BY RACE	1 MILE	3 MILE	5 MILE
White	39,976	203,599	626,887
Black	11,958	137,789	409,753
American Indian/Alaskan Native	284	1,404	3,866
Asian	2,105	13,604	56,514
Hawaiian & Pacific Islander	15	57	269
Two or More Races	1,852	10,262	31,346
Hispanic Origin	1,411	7,993	25,940

INCOME	1 MILE	3 MILE	5 MILE
\$25,000 - 50,000	6,617	40,480	108,784
\$50,000 - 75,000	4,503	30,088	83,146
\$75,000 - 100,000	2,730	17,393	55,881
\$100,000 - 125,000	1,596	10,280	36,413
\$125,000 - 150,000	805	5,657	23,000
\$150,000 - 200,000	704	4,491	21,529
\$200,000+	303	2,368	18,343

DAYTIME EMPLOYMENT	ONE MILE			THREE MILE			FIVE MILE		
	TOTAL EMPLOYEES	TOTAL BUSINESSES	EMPLOYEES PER BUSINESS	TOTAL EMPLOYEES	TOTAL BUSINESSES	EMPLOYEES PER BUSINESS	TOTAL EMPLOYEES	TOTAL BUSINESSES	EMPLOYEES PER BUSINESS
Service-Producing Industries	18,253	2,002	9	92,245	11,173	8	365,415	43,223	8
Trade Transportation & Utilities	3,894	373	10	22,331	2,202	10	72,466	7,032	10
Information	765	31	25	3,254	219	15	11,314	861	13
Financial Activities	643	144	4	5,899	1,061	6	25,798	4,180	6
Professional & Business Services	1,533	172	9	10,086	1,217	8	48,030	4,903	10
Education & Health Services	8,333	924	9	27,225	3,907	7	118,125	17,300	7
Leisure & Hospitality	1,735	120	14	13,477	927	15	49,025	3,400	14
Other Services	916	211	4	6,719	1,456	5	25,716	4,926	5
Public Administration	434	27	16	3,254	184	18	14,941	621	24
Goods-Producing Industries	4,346	313	14	32,861	1,265	26	74,696	4,080	18
Natural Resources & Mining	59	6	10	75	14	5	227	49	5
Construction	749	111	7	4,152	624	7	14,584	2,081	7
Manufacturing	3,538	196	18	28,634	627	46	59,885	1,950	31
Total	22,599	2,315	10	125,106	12,438	10	440,111	47,303	9



Specializing in retail real estate services, our team is committed to working with each client to achieve their objectives from assisting with project leasing, site selection, acquisitions/dispositions of income producing properties or providing market research for future projects.

CONTACT

6467 Orchard Lake Road, Suite A
West Bloomfield, Michigan 48322


(P): (248) 538-2000
(F): (248) 538-9905

Email: info@cmprealestategroup.com
Website: www.cmprealestategroup.com

SERVICES

Retail Leasing	Investment Sales	Tenant Representation	Acquisitions	Dispositions
Market Analysis	Land Sales	Property Management	Real Estate Consulting	

FOLLOW US

 CMP Real Estate Group

 @CMPRealEstate

Disclaimer

All information contained herein has been secured by sources we believe to be reliable; however, CMP Real Estate Group, LLC has not independently verified any of the information, including any financial estimates and projections and selected real estate information, contained herein. This information provided may include but not be limited to selected financial information, estimates and projections that reflect various assumptions concerning anticipated results, which may or may not prove to be correct and selected real estate information which may or may not prove to be correct. Such projections and estimates may or may not be indicative of future performance, which may be significantly more or less favorable than that as reflected herein.